

# **MAGic<sup>®</sup>**

## **Screen Magnification Software with Speech**

***Quick Start Guide  
for Demo Version***

**Freedom Scientific BLV Group, LLC**  
December 2007

# **MAGic® Quick Start Guide**

**PUBLISHED BY**

**Freedom Scientific BLV Group, LLC  
11800 31<sup>st</sup> Court North  
St. Petersburg, Florida 33716-1805  
USA  
<http://www.FreedomScientific.com>**

**Information in this document is subject to change without notice. No part of this publication may be reproduced or transmitted in any form or any means, electronic or mechanical, for any purpose, without the express written permission of Freedom Scientific.**

**Copyright © 2007 Freedom Scientific BLV Group, LLC, All Rights Reserved.**

**MAGic and JAWS are registered trademarks of Freedom Scientific BLV Group, LLC in the United States and other countries. Microsoft, Windows Vista, Windows XP, Windows NT, Windows 2000, Microsoft Word, Microsoft Excel, and Internet Explorer are registered trademarks of Microsoft Corporation in the U.S. and/or other countries. Other product and company names mentioned herein may be the trademark of their respective owners.**

# Welcome to MAGic

MAGic is a software solution ideally suited for computer users with low vision, or anyone who spends extended periods of time in front of a computer screen.

MAGic lets you magnify your computer screen from 1 to 36 times its usual size. You can choose from a number of different adjustable views that let you see both a magnified and unmagnified portion of the screen at the same time.

Speech features assist you in processing the information on your screen. MAGic can read text that you type or point at with the mouse. MAGic moves the magnified area of the screen so you always see the text being read and highlights words as they are spoken.

Mouse and cursor enhancements help you track the location of the mouse pointer and cursor on the screen. You can choose from a wide variety of enhancement styles. MAGic lets you change the color of these enhancements, apply transparency effects, adjust their size, and more.

Color enhancements let you change how colors display on your screen. You can create rules that replace one color with another or switch two colors. You can also apply color tinting, make your screen black-and-white (monochrome), and invert the brightness and colors of your display.

Other MAGic features track elements of your screen, such as the mouse pointer, dialog boxes, and so on. The Locator feature provides you with a way to quickly find and move to different areas of the screen. The MAGic multi-directional panning system gives you complete control with adjustable speed, direction, stop and start, and screen navigation controls.

# System Requirements

The recommended system requirements for MAGic are listed below.

<b>Specification</b>	<b>Minimum Requirement</b>
MAGic Standard	Windows XP Home, Windows Vista Home Premium, Windows Vista Home Basic
MAGic Professional and MAGic Pro Scripting Edition*	Windows Vista Ultimate, Windows Vista Enterprise, Windows Vista Business, Windows Vista Home Premium, Windows Vista Home Basic, Windows XP, Windows Media Center Edition, Windows 2000, Windows XP Home and Pro
Processor speed	450 MHz or higher
RAM	256 MB (512 MB recommended)
Required hard disk space	MAGic requires less than 200 MB of hard disk space for program and settings files. Additional space is required for the operating system, other programs, and the Windows swap file.
Video*	256 color graphics  * While MAGic will work with 256 colors, it is recommended that you use high or true color depth (16-bit color or higher).
Sound	Windows compatible sound card (for speech option)

# Installing MAGic

1. Insert the MAGic CD into your CD-ROM drive.
2. When the **MAGic Setup** dialog box appears, choose the **MAGic Setup** button.

**Tip:** If your MAGic installation CD does not start automatically, click the **Start** button, select **Run**, and type **D:\setup**. If your CD-ROM is not D, substitute the correct drive letter.

3. The MAGic Setup program starts. You will hear the installation speak the instructions as they appear on your screen. Follow these instructions to complete the MAGic installation.

Choose to run the automatic (typical) or guided (custom) installation of MAGic. The typical installation, which is recommended for most users, installs the most common program features. Use the custom installation if you want to specify the default location where MAGic is stored on your hard disk, or if you want to install client or server components for remote access. This type of installation is recommended for advanced users.

## Starting MAGic

MAGic gives you a variety of ways to start the program.

- Press the hot key, **ALT+CTRL+M**, which can be automatically assigned from the MAGic Startup Wizard.
- Double-click the MAGic icon on your desktop.
- From the **Start** menu, choose **Programs**, open the **MAGic** submenu, and choose **MAGic**.
- From the **Start** menu, choose **Run**, type **magicxx**, where xx is the version number, and press **ENTER**.


After you start MAGic for the first time, you can do the following:

- Designate a hot key assignment to launch MAGic.
- Choose to run the program when Windows starts.

- Choose if you want **MAGic** to play sounds instead of hearing spoken descriptions of Windows controls.
- Install audio training material.

## Quitting **MAGic**

To quit **MAGic**, do one of the following:

- Press **ALT+F4**
- Click the Close button  in the top right hand corner of the window.
- Select **Exit** from the **File** menu.

**Tip:** If you want **MAGic** to ask you to save your settings when you quit, open the **File** menu and choose **Preferences**. Select the **Prompt to Save Settings on Exit** check box.

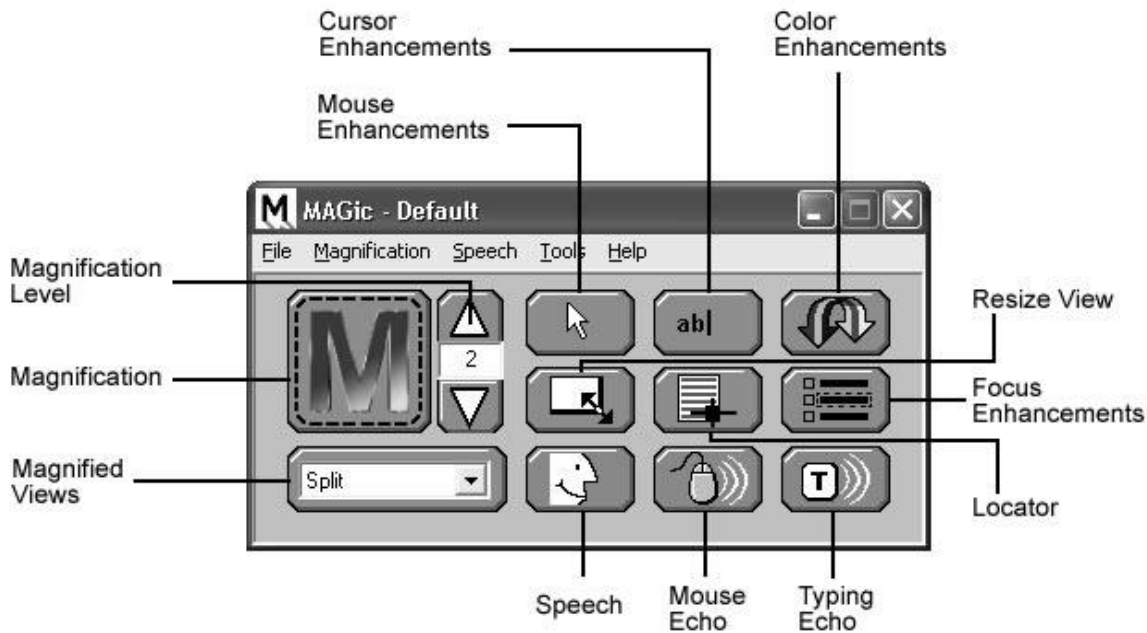
## Getting Started

Start **MAGic** by pressing **ALT+CTRL+M** or by double-clicking the **MAGic** program icon on your Windows desktop. You can also start **MAGic** by opening the **Start** menu, choosing **Programs, MAGic** and then selecting **MAGic**.

**Tip:** You can change how and when **MAGic** starts by opening the **File** menu and choosing **Preferences**.

When you first start **MAGic**, your screen is displayed in 2× magnification using the Full view. Speech will also be enabled. You can change the magnification level, magnified view, speech, and many other options by using the **MAGic** user interface.

The user interface is a small window that appears in approximately the center of your display. This window allows you to control all aspects of **MAGic** and contains the magnification and speech buttons in addition to the **MAGic** menu and title bars. The user interface is shown below.



## Magnification and Speech Buttons

One of the first things you will notice about the user interface is the rows of blue and orange buttons. The blue buttons control magnification features while the orange buttons control speech. Below are brief descriptions of each button.

### Button

### Function



Use the **Magnification** button to enable or disable magnification.



The current magnification level can be adjusted with the two **Magnification Level** buttons. The number in the between the two buttons shows the current level.



Use the **Mouse Enhancements** button to enable/disable enhancements and modifications for your mouse pointer. These enhancements make the mouse pointer easier to track and maneuver on your screen.

## Button

## Function



Use the **Cursor Enhancements** button to enable/disable enhancements for your cursor. These enhancements make the cursor easier to follow when editing or writing text.



Use the **Colors Enhancements** button to enable/disable color enhancements. This feature allows you to replace colors, adjust the brightness and contrast, apply tinting, blend colors, and invert the brightness and colors of your display.



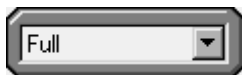
Use the **Locator** button to enable/disable the Locator function. The Locator function allows you to find items on your screen.



Use the **Focus Enhancements** button to enable/disable the Focus Enhancements function. This function places a rectangular border around the item that is currently selected on your monitor.



The **Resize View** button allows you to change the dimensions of your magnified view.



Select your preferred magnified view from the **Magnified Views** list.



Use the **Speech** button to enable or disable speech.



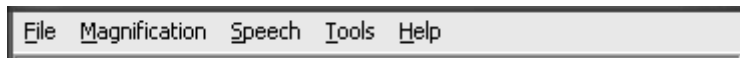
Use the **Mouse Echo** button to toggle the mouse echo feature on and off. The mouse echo feature enables MAGic to read text that you point at with the mouse.



Use the **Typing Echo** button to enable or disable the typing echo. If typing echo is enabled, MAGic announces the words or characters you type.

# MAGic Menus

Located above these buttons is the menu bar. The menu bar allows you to customize speech, magnification, and your keyboard. You can also view help information and perform other functions. Each menu is described below.



<b>Menu</b>	<b>Purpose</b>
<b><u>F</u>ile</b>	The <b>File</b> menu allows you to save your settings, restore the original Freedom Scientific settings, and change your <b>MAGic</b> preferences.
<b><u>M</u>agnification</b>	The <b>Magnification</b> menu allows you to customize how you view your screen with <b>MAGic</b> . You can also change mouse options, panning settings, view properties and more.
<b><u>S</u>peech</b>	You can customize <b>MAGic</b> 's speech components to fit your particular needs. The <b>Speech</b> menu allows you to customize how you hear <b>MAGic</b> .
<b><u>T</u>ools</b>	The <b>Tools</b> menu allows you to customize how you use your computer's keyboard with <b>MAGic</b> . You can also access the Freedom Scientific Script Manager application from this menu. (Note: Requires <b>MAGic Pro Scripting Edition</b> .)
<b><u>H</u>elp</b>	The <b>Help</b> menu provides you with detailed help information for the various <b>MAGic</b> functions and options. You can also view information on the newest features for this release and see your current <b>MAGic</b> version.

# The MAGic Key

The **MAGic Key** is the **CAPS LOCK** key on your keyboard. Pressing the **MAGic Key** in combination with other keys activates a number of **MAGic** commands. If you want to assign the **MAGic Key** to a different key on your keyboard, open the **Tools** menu, choose **Keyboard Manager**, and then choose **MAGic Key**.

## Reading Text with MAGic

**MAGic** can use synthesized speech to read text that appears on your screen, including documents, menus, dialog boxes, e-mail messages, Web pages, and more. Additionally, **MAGic** can highlight the text as it is spoken. To customize **MAGic's** speech, use the commands available on the **Speech** menu.

**Tip:** You can silence **MAGic's** speech at any time by pressing **CTRL**. To toggle speech on or off, press **MAGic Key+F3**.

## Using the Mouse to Read Text

Mouse echo is a feature that allows you to read text with your mouse. To use mouse echo, just move your mouse pointer to some text on your screen and then stop. After a short delay, **MAGic** will speak the word you pointed to. You can use the **Mouse Echo** button to enable or disable this feature.

In addition, you can hold down the **MAGic Key** and press the left mouse button to start reading from the current location of the mouse pointer. You do not need to hold down the **MAGic Key** while **MAGic** reads. **MAGic** stops reading when you move the mouse or press a key.

## Using the Keyboard to Read Text

**MAGic** has a number of different keystrokes that let you use the keyboard to read text. To use these keystrokes, move the insertion point or mouse pointer to any location within the document. Then press one of the following key combinations to read from that location:

- To begin reading from your current location, press **MAGic Key+SPACEBAR** or **INSERT+DOWN ARROW**.

- To read the current character, press **NUM PAD 5**.
- To read the current word, press **MAGic Key+ALT** or **INSERT+NUM PAD 5**. To spell the current word, press the keystroke twice quickly.
- To read the next word, press **INSERT+RIGHT ARROW**. To read the previous word, press **INSERT+LEFT ARROW**.
- To read the current line, press **MAGic Key+L** or **INSERT+UP ARROW**. To read the next line, press **DOWN ARROW**. To read the previous line, press **UP ARROW**.
- To read from the beginning of the line to the current position of the cursor, press **INSERT+HOME**. To read from the current position of the cursor to the end of the line, press **INSERT+PAGE UP**.
- To read the current sentence, press **MAGic Key+S**. To read the next sentence, press **CTRL+MAGic Key+S**.
- To read the current paragraph, press **MAGic Key+P**. To read the next paragraph, press **CTRL+MAGic Key+P**. To read the previous paragraph, press **ALT+MAGic Key+P**.
- To begin reading a column of text from your current location, press **MAGic Key+C**.
- To read text that you have selected, press **MAGic Key+CTRL** or **INSERT+SHIFT+DOWN ARROW**.
- To hear the contents of the Clipboard, press **MAGic Key+X**.

**Note:** By default, the **MAGic Key** is assigned to the **CAPS LOCK** key. To change this, open the **Tools** menu, choose **Keyboard Manager**, and then choose the **MAGic Key** button.

When you read text with these keystrokes, **MAGic** highlights the word it is currently speaking. To change the color and/or style of this highlighting, open the **Speech** menu and choose **Highlight Options**.

## Reading Text in Dialog Boxes

In addition to the reading commands listed previously, you can use the following keystrokes to hear information in Windows dialog boxes:

- To read the title bar of the active window or dialog box, press **MAGic Key+T** or **INSERT+T**.

- To read the bottom of the active window (which usually contains the status bar), press **INSERT+PAGE DOWN**. To read the top line of the active window (which usually contains the title bar), press **INSERT+END**.
- To hear the name of the default button that will be activated when you press **ENTER**, press **INSERT+E**.
- To read the currently selected dialog box option (such as an edit box or check box), press **MAGic Key+TAB** or **INSERT+TAB**.
- To hear the access key for the currently selected dialog box option, press **SHIFT+NUM PAD 5**.

## Getting Help

### Online Help System

To access MAGic's online help system, select **Help Topics** from the **Help** menu, which is located on the menu bar of the MAGic application window. Use the **Contents** tab to navigate the help system. Use the **Index** or the **Search** tabs to search for specific topics within the help system. If you want MAGic to read the help topics to you, position the mouse pointer toward the beginning of the help page, and press **MAGic Key+SPACEBAR**. You can move to the next topic by clicking the "Next" link at the bottom of the page. To return to the previous topic, click the "Back" link.

### What's This? Help

MAGic's What's This? help is context-sensitive help that you can use as a reference when working with MAGic's user interface or dialog boxes. Press **SHIFT+F1** on any button on the user interface, or control in a dialog box to see a brief description of the purpose of the control and how to use it.

### MAGic User's Guide

We provide you with the content of the MAGic online help system in the *MAGic User's Guide*, which is printed in large text for easier reading. This book contains detailed descriptions of MAGic's features, and also pull-out reference cards.

# MAGic Basic Training

Listen to the MAGic Basic Training to learn the fundamentals of using MAGic Screen Magnification. For more information, see *Basic Training* on page 11.

## Technical Support

If you do not find the answers to questions or problems that you have, contact Freedom Scientific Technical Support, (727) 803-8600.

## About MAGic

Select **About MAGic** from the **Help** menu on the MAGic user interface to view the version number of MAGic you are currently running.

## Basic Training

The basic training for MAGic is included in DAISY format on your MAGic program CD. When you install MAGic, you are also asked if you want to install these materials. You can listen to and read the training modules by using the FSReader Demo DAISY reader included with MAGic. To start FSReader Demo, open the **Start** menu, open the MAGic program group, and choose **FSReader Demo**. Alternatively, you can open the MAGic **Help** menu and choose **Training**.

After you start FSReader Demo, a list of all DAISY books in the current folder appears. To begin the basic training, select the "MAGicBasicTraining" DAISY book and choose **Open**. For more information on using FSReader, select the "FSReaderGettingStarted" DAISY book and choose **Open**.

These training modules are designed to give you a basic overview of MAGic. You will learn how to change your magnification and speech preferences, along with several other techniques. All users are encouraged to take advantage of this training.

# MAGic Hot Keys

## General

Start MAGic	ALT+CTRL+M (default keystroke – can be changed using the Startup Wizard)
Run Script Manager*	INSERT+O
Minimize/Restore the MAGic User Interface	MAGic Key+U
Pass Through Key	MAGic Key+3
Refresh Screen	MAGic Key+ESC
Open MAGic Context Menu	MAGic Key+APPLICATION Key
*Only available for MAGic Pro Scripting Edition	

## Magnification, Views, & Enhancements

Increase Magnification	MAGic Key+NUM PAD PLUS or CTRL+EQUALS
Decrease Magnification	MAGic Key+NUM PAD MINUS or CTRL+DASH
Magnification Toggle On/Off	MAGic Key+DELETE
Toggle between 1x Magnification	MAGic Key+SHIFT+DELETE
Switch to Next Magnified View	MAGic Key+NUM PAD SLASH
Switch to Previous Magnified View	SHIFT+MAGic Key+NUM PAD SLASH
Toggle Color Enhancements On/Off	MAGic Key+F12
Toggle Cursor Enhancements On/Off	MAGic Key+F8
Toggle Mouse Enhancements On/Off	MAGic Key+F4

## Panning and Screen Movement

Pan Right	MAGic Key+RIGHT ARROW
Pan Left	MAGic Key+LEFT ARROW
Pan Down	MAGic Key+DOWN ARROW
Pan Up	MAGic Key+UP ARROW
Increase Speed during Panning	NUM PAD PLUS
Decrease Speed during Panning	NUM PAD MINUS
Move to Left Edge of Screen in Magnified View	MAGic Key+HOME
Move to Right Edge of Screen in Magnified View	MAGic Key+END
Move to top of Screen	MAGic Key+PAGE UP
Move to Bottom of Screen	MAGic Key+PAGE DOWN
Move to Beginning of Next Line	MAGic Key+ENTER

## Tracking

Tracking Toggle On/Off	MAGic Key+R
Move View to Mouse Pointer	MAGic Key+NUM PAD 5
Move View to Cursor	SHIFT+MAGic Key+NUM PAD 5
Tether Mouse to Display	CTRL+INSERT+NUM PAD MINUS

## Cursor Movement

Route Cursor to Mouse	INSERT+NUM PAD PLUS
Route Mouse to Cursor	INSERT+NUM PAD MINUS

## Locator Mode

Start Locator	<b>MAGic Key+F10</b>
Stop Locator and Move to Selected Area	<b>ENTER</b>
Stop Locator without Moving the Magnified Area	<b>ESC</b>
Move Left	<b>LEFT ARROW</b>
Move Right	<b>RIGHT ARROW</b>
Move Up	<b>UP ARROW</b>
Move Down	<b>DOWN ARROW</b>
Move to End of Line	<b>END</b>
Move to Beginning of Line	<b>HOME</b>
Move to Top of Screen	<b>PAGE UP</b>
Move to Bottom of Screen	<b>PAGE DOWN</b>

## Quick View Frame

Toggle Quick View Frame On/Off	<b>MAGic Key+Q</b>
Set upper left corner of frame	<b>MAGic Key+LEFT BRACKET</b>
Set lower right corner of frame	<b>MAGic Key+RIGHT BRACKET</b>
Create frame around current dialog box option	<b>MAGic Key+LEFT BRACKET</b> twice quickly
Open Quick View Manager	<b>MAGic Key+9</b>

## Speech

Silence Current Speech	<b>CTRL</b>
Enable/Disable Speech	<b>MAGic Key+F3</b>

Voice Profiles	<b>MAGic Key+F11</b>
Set Screen Echo	<b>INSERT+S</b>
Select Verbosity Scheme	<b>ALT+INSERT+S</b>

## Document and Text Reading

Read All from Location	<b>MAGic Key+SPACEBAR or INSERT+DOWN ARROW</b>
Read Active Window (reads from the beginning of document window)	<b>MAGic Key+SPACEBAR (twice) or INSERT+DOWN ARROW (twice)</b>
Say All	<b>INSERT+DOWN ARROW</b>
Alternate Say All	<b>ALT+INSERT+DOWN ARROW</b>
Say Currently Selected Text	<b>MAGic Key+CTRL or INSERT+SHIFT+DOWN ARROW</b>
Say Current Character	<b>NUM PAD 5</b>
Say Current Word	<b>MAGic Key+ALT or INSERT+NUM PAD 5</b>
Spell Current Word	<b>MAGic Key+ALT (twice) or INSERT+NUM PAD 5 (twice)</b>
Next Word	<b>INSERT+RIGHT ARROW</b>
Prior Word	<b>INSERT+LEFT ARROW</b>
Select Next Word	<b>INSERT+SHIFT+RIGHT ARROW</b>
Select Prior Word	<b>INSERT+SHIFT+LEFT ARROW</b>
Say Current Line	<b>MAGic Key+L or INSERT+UP ARROW</b>
Next Line	<b>DOWN ARROW</b>
Prior Line	<b>UP ARROW</b>
Read to Cursor	<b>INSERT+HOME</b>

Read from Cursor	INSERT+PAGE UP
Say Current Sentence	MAGic Key+S
Next Sentence	CTRL+MAGic Key+S
Say Current Paragraph	MAGic Key+P
Read Column from Current Position	MAGic Key+C
Say Contents of Clipboard	MAGic Key+X

**Note:** When using the document and text reading commands, if you move the mouse MAGic reads from the current location of the mouse pointer. If you move the insertion point, MAGic reads from the location of the insertion point.

## Dialog Box Reading

Say Title Bar	MAGic Key+T or INSERT+T
Read Bottom of Window	INSERT+PAGE DOWN
Say Top Line of Window	INSERT+END
Say Default Button in Dialog Box	INSERT+E
Say Window Prompt and Text	MAGic Key+TAB or INSERT+TAB
Say Current Access Key	SHIFT+NUM PAD 5

## Table Reading

Say Current Cell	ALT+CTRL+NUM PAD 5
Cell to Right	ALT+CTRL+RIGHT ARROW
Cell to Left	ALT+CTRL+LEFT ARROW
Cell Below	ALT+CTRL+DOWN ARROW
Cell Above	ALT+CTRL+UP ARROW
First Cell	ALT+CTRL+HOME

Last Cell	ALT+CTRL+END
First Cell in Column	ALT+CTRL+SHIFT+UP ARROW
Last Cell in Column	ALT+CTRL+SHIFT+DOWN ARROW
First Cell in Row	ALT+CTRL+SHIFT+LEFT ARROW
Last Cell in Row	ALT+CTRL+SHIFT+RIGHT ARROW

## Typing Echo

Cycle through Indicate Capitalization options	MAGic Key+F2
Cycle through Typing Echo Unit options	INSERT+2

## Mouse Echo

Mouse Echo Toggle	MAGic Key+M
-------------------	-------------

**Note:** Toggling the mouse echo rotates between speak lines, speak words, and mouse echo off.

Some actions in MAGic do not have hot keys assigned. You can define hot keys for these features from within the **Keyboard Manager** dialog box.

# Windows Shortcut Keys

---

## General

Get Help	F1
Open the <b>Start</b> menu	WINDOWS Key or CTRL+ESC
Open Windows Explorer	WINDOWS Key+E
Open the Run dialog box	WINDOWS Key+R
Find file or folder from Desktop	F3
Minimize all windows	WINDOWS Key+M
Switch between programs	ALT+TAB
Quit the active program	ALT+F4

## For Windows and Menus

Open the application control menu	ALT+SPACEBAR
Move to the menu bar	ALT
Choose a menu command	ENTER
Move between menus	ALT, arrow keys
Close a menu	ESC
Close a cascading menu	ALT
Open a child window control menu	ALT+HYPHEN
Close a child window	CTRL+F4
Open the context menu	APPLICATION Key or SHIFT+F10

## For Dialog Boxes

Move through dialog box options	TAB
Move backward through dialog box options	SHIFT+TAB
Move to another tab	CTRL+TAB
Reverse direction through tabs	CTRL+SHIFT+TAB
Move to first option	HOME
Move to last option	END
Select or clear an item in a list	SPACEBAR or CTRL+SPACEBAR
Select or clear a check box	SPACEBAR

## For Reading Text

Move left one character	LEFT ARROW
Move right one character	RIGHT ARROW
Move left one word	CTRL+LEFT ARROW
Move right one word	CTRL+RIGHT ARROW
Move to beginning of line	HOME
Move to end of line	END
Move up one paragraph	CTRL+UP ARROW
Move down one paragraph	CTRL+DOWN ARROW
Scroll up one screen	PAGE UP
Scroll down one screen	PAGE DOWN
Move to beginning of document	CTRL+HOME
Move to end of document	CTRL+END

## For Editing Text

Copy	CTRL+C
Cut	CTRL+X
Paste	CTRL+V
Undo	CTRL+Z
Delete character to the left	BACKSPACE
Delete character to the right	DELETE
Select one character left	SHIFT+LEFT ARROW
Select one character right	SHIFT+RIGHT ARROW
Select one word left	CTRL+SHIFT+LEFT ARROW
Select one word right	CTRL+SHIFT+RIGHT ARROW
Select to beginning of line	SHIFT+HOME
Select to end of line	SHIFT+END
Select to beginning of document	CTRL+SHIFT+HOME
Select to end of document	CTRL+SHIFT+END
Select all	CTRL+A

## For Windows Explorer

Rename selected file or folder	F2
Open properties	ALT+ENTER
Refresh a window	F5
Switch between panes	F6 or TAB
Go up a level	BACKSPACE